

Teamwork Global Group Ltd

天沃环球集团有限公司

ROOM A1, 11/F WINNER BUILDING, 36 MAN YUE STREET, HUNG HOM, KOWLOON, HONG KONG

POST CODE:999077 Tel:0086-0755-85265699 Fax:0086-0755-85266599

Production Confirmation Sheet

生产规格确认书

Customer Motor model (客户马达型号) : 7512-230V

TW Motor model(我司马达型号) : TW-DC7512M23

TW Motor type(马达类型) : DC MOTOR

Customer PO Number (客户订单号) :

Prepared by (作成) : Celine Lee

Date (日期) : 2023.05.15

Approver by (批准) : Leo Lee

Date (日期) : 2023.05.17

客户确认签名: CUSTOMER APPROVED SIGNATURES

此为正式生产确认数据,我方将严格按照此技术数据批量生产

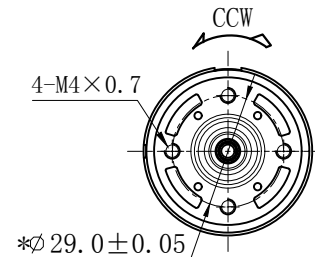
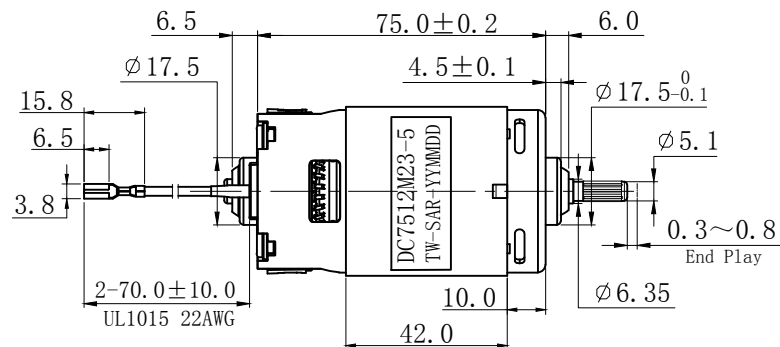
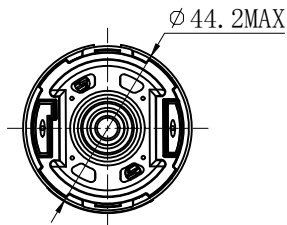
This is formal technical data,all mass order production will be followed exactly

according to this approved technical file

FPS.DC7512M23-5-105KC

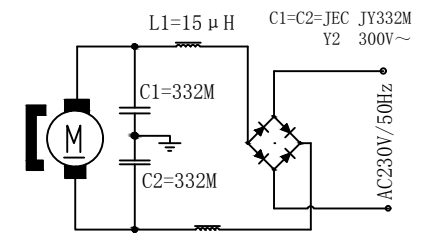
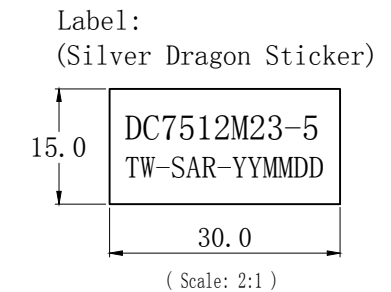
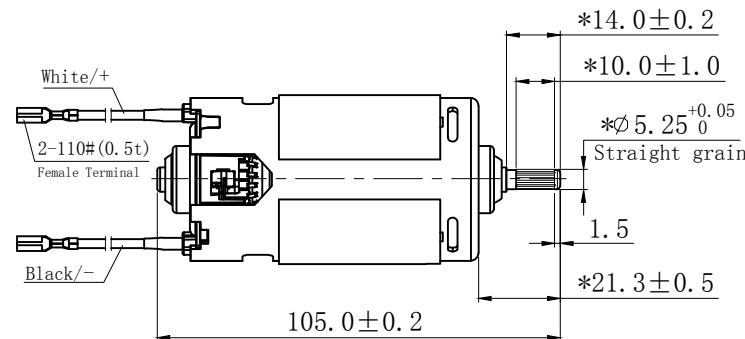
Revision record

Version	REVISION	Date	Signature
A	Initial Release.	2023-5-17	HHF



Technical requirements:

- Rated voltage:
AC230V/50Hz (full wave rectification);
- Motor no-load performance:
(after 15 seconds of no-load operation);
No load power: 35W MAX
No load current: 0.20A MAX
No load speed: 12800 ± 12% RPM
- Motor load performance: (simulated blade: 80*25*2.0t)
Load power: 100 ± 12% W Load current: 0.52 ± 12% A
Load speed: 10500 ± 12% RPM
- Locked rotor power: ≥ 800W (peak);
- Motor running direction: CCW (straight line end view);
- Axial virtual position: 0.3-0.8 mm;
- No load: Spark ≤ 11/2 levels, vibration ≤ 12mm/s;
- No-load noise: ≤ 72dB (A), at a distance of 30cm from the level of the test prototype, Environmental noise ≤ 45dB (A);
- Insulation and voltage withstand test: 1500VAC/5mA/1Sec;
- Insulation level: Class H;
- Temperature rise test: According to IEC-60335 testing standard combined with product testing requirements, Motor temperature rise ≤ 140K;
- Locked rotor test: Rated voltage 230V/50Hz (rectified), locked rotor for 30 seconds or final result, The motor does not show open flames, the winding temperature rise is ≤ 260 °C, and the high voltage is 1250V/8.3mA/1min through;
- Life test: rated voltage with simulated load 80*25*2.0t blade, 1 minute on/1 minute off It is a small cycle, and a 30 minute rest after every five consecutive small cycles is a systemic circulation, Accumulated work ≥ 450 systemic circulation (≥ 37.5 hours);
- Dimensions with "*" are the main control dimensions;
- The materials used comply with the relevant requirements of RoHS&REACH;
- Label: (Silver Dragon Sticker)



Motor circuit diagram

Customer Approval:		Unit: mm	TEAMWORK GLOBAL GROUP LIMITED	
Signature		Date	Motor Outline Drawing	
Draw		Model: DC7512M23-5		
Examine		FPS.DC7512M23-5-105KC		
Approve		Version		
Undeclared tolerance standards: GB/T 1804 - m		A		
Linear dimensions	101-6	16-30	130-120	120-400
	±0.1	±0.2	±0.3	±0.5
Angle	10	10-50	50-120	120-400
	±1'	±3'	±20'	±10'

Scale: 1:1

The number of pages: 1 of 1

MOTOR CHARACTERISTICS (电机曲线图)

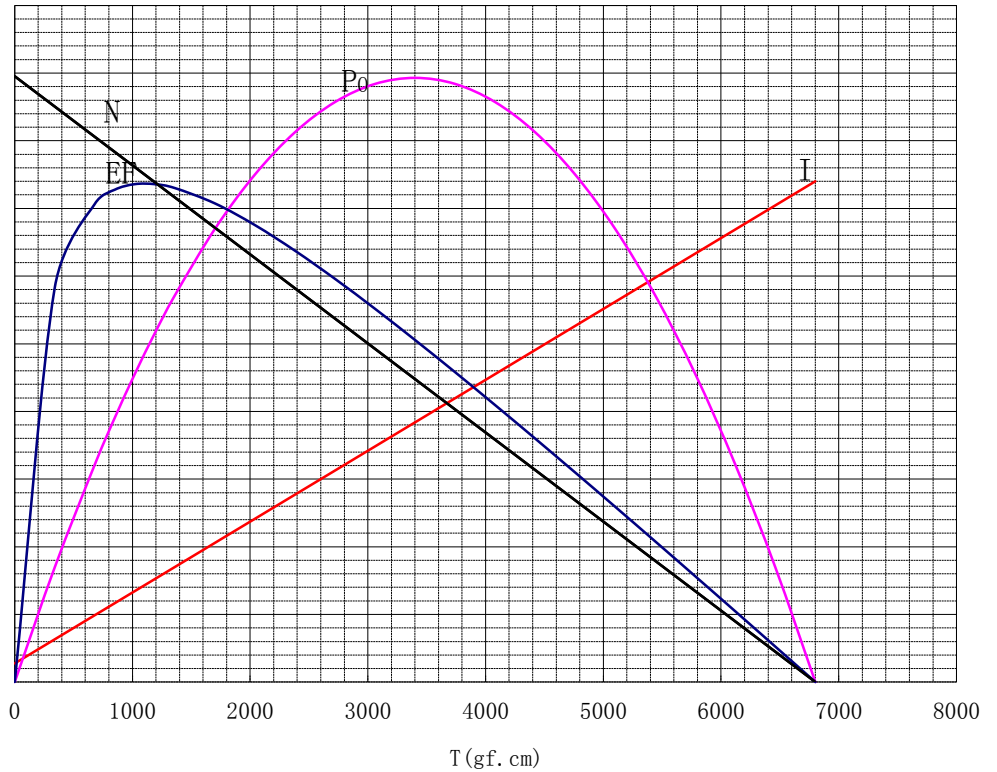
Motor code number (电机编号或型号): DC7512M23-5

Constant voltage (额定电压): 230V

Rotation (转向): CCW

— N: Speed: 转速
— I: Current: 电流
— P: Out power: 输出功率
— EF: Efficiency: 效率

P_0	EF	I	N
250	100	5000	14300
125	50	2500	7150
[W]	[%]	[mA]	r/min



T: torque: 力矩

	T (mNm)	(gf. cm)	N (r/min)	I (mA)	P_0 [W]	EF [%]
NO Load...N, I (空载)	0.00	0	12800	138	0.0	0.00
	4.90	50	12706	164	6.5	17.25
Start Point (起始点设定)	14.71	150	12518	217	19.3	38.66
	24.51	250	12329	269	31.6	51.11
50	34.31	350	12141	321	43.6	58.97
	44.12	450	11953	374	55.2	64.18
stepped control (梯度控制)	53.92	550	11765	426	66.4	67.72
	63.73	650	11576	478	77.2	70.13
Rated (定格)	73.53	750	11388	531	87.6	71.75
	83.33	850	11200	583	97.6	72.79
	93.14	950	11012	636	107.3	73.39
	102.94	1050	10824	688	116.6	73.66
	112.75	1150	10635	740	125.4	73.66
	122.55	1250	10447	793	133.9	73.45
	132.35	1350	10259	845	142.0	73.07
	142.16	1450	10071	898	149.8	72.55
Stop...T (堵转)	666.67	6800	0	3700	0.0	0.00
Max... P_0 (最大功率)	333.33	3400	6400	1919	223.2	50.57
Max...EF (最大效率)	107.91	1101	10728	715	121.1	73.69

Check (确认):	Make (作成):	Date (时间):	2023-5-17
-------------	------------	------------	-----------

TEAMWORK GLOBAL GROUP LIMITED

Sample Test Report

Motor type	DC Motor	Motor model	DC7512M23-5	Client code		Project No	
Voltage	AC230V/50Hz (Full-wave rectifier)	Date	2023-5-17	Quantity	5PCS	Customer P/N	
Testing environment	Temperature:27°C / Humidity:62%	Reduction Ratio		Inspection Quantity	5PCS	Surveyor	Lingan.Liu

Detected data

Project	No-load current (A)	No-load speed (rpm)	No-load power (W)	Simulated load blades:80×25 mm			Locked rotor current (A)	Locked rotor power (W)	Stall torque (g.cm)	Running direction	Noise cm/dB	vibrate mm/s	Shaft extension size mm	End play mm	Fuselage Length mm	Motor outer circle mm	Mandrel length mm	Hi-pot test
				load current (A)	Load speed (rpm)	Load power (W)												
standard	0.20 MAX	12800±12%	35 MAX	0.52±12%	10500±12%	100±12%	3.7	833	6800	CCW	30/≤72	≤12	21.3±0.5	0.3~0.8	75±0.2	φ 44.2 MAX	105.0±0.2	1500VAC/5mA/1Sec
1	0.136	12800	23.1	0.51	10480	100.2				CCW	66	2.5	21.2	0.4	75	43.9	105.1	Passed
2	0.139	12800	23.9	0.53	10480	102.4				CCW	67	2.4	21.3	0.5	75	43.9	105.0	Passed
3	0.142	12600	24.2	0.53	10470	102.1				CCW	67	2.3	21.2	0.5	75	43.9	105.1	Passed
4	0.153	12800	25.8	0.53	10500	103.8				CCW	68	2.5	21.4	0.6	75	43.9	105.1	Passed
5	0.138	12800	23.1	0.53	10420	102.4				CCW	67	2.6	21.5	0.5	75	43.9	105.0	Passed
Customer samples	0.138	12600	23.5	0.533	10400	101.8	3.9	873	6300	CCW	68	2.6	21.5	0.6	75	44.1	105.0	Passed

Notes: (Customer sample model: Sarex/Group 7733M230-EMC 230V/50Hz 2022-02-25)

Surveyor: Lingan.Liu

Approval: HaiFei.Huang

Ratify: And.Yang